

Ink Jet.

Laser.

Thermal Transfer.

Labelers.

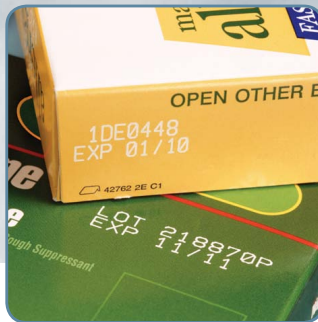
Track & Trace.

Supplies.

Parts & Service.

## Industrial Product Guide

Marking, Coding & System Solutions





### Videojet® 1220 Ink Jet Printer

This continuous ink jet printer is designed for customers with low volume production who need basic coding in an easy to use printer. The Videojet 1220 provides up to 9,000 hours of production before required preventive maintenance.

- Up to 3 lines of code with speeds up to 533 fpm (162 mpm)
- No mess, no waste, no mistake Smart Cartridge™ fluid delivery system reduces waste
- Airless, pump-drive system with 9,000 hour\* core life (\* or 3 years, whichever comes first)
- Standard USB for memory back up



Small Character Ink Jet



### Videojet® 1520 Ink Jet Printer

Simple operation. Less maintenance. Superior print quality. Engineered to keep your line up and running longer. Designed for customers who print multiple shifts per day, providing up to 12,000 hours of production before required preventive maintenance.

- Up to 5 lines of code with speeds up to 914 fpm (279 mpm)
- No mess, no waste, no mistake Smart Cartridge™ fluid delivery system reduces waste
- Airless, pump-driven system with 12,000 hour core life
- Advanced Clean Flow™ printhead design maximizes uptime



Small Character Ink Jet



### Videojet® 1620 Ink Jet Printer

Designed for customers with high speed production lines and around the clock coding, this ink jet printer provides superior uptime in high speed applications for greater productivity, and up to 14,000 hours of production before required preventive maintenance.

- Up to 5 lines of high resolution print with speeds up to 960 fpm (293 mpm)
- No mess, no waste, no mistake Smart Cartridge™ fluid delivery system reduces waste
- Airless, pump-driven system with 14,000 hour core life
- Advanced Clean Flow™ printhead design maximizes uptime



Small Character Ink Jet



### Videojet® 1610 Dual Head Ink Jet Printer

Dual printhead capability with superior uptime for twice the productivity. The 1610 Dual Head provides up to 12,000 hours of production before required preventive maintenance.

- Up to 5 lines of code from each printhead with speeds up to 960 fpm (293 mpm)
- No mess, no waste, no mistake Smart Cartridge™ fluid delivery system reduces waste
- Airless, pump-driven system with 12,000 hour core life
- Advanced Clean Flow™ printhead design maximizes uptime



Small Character Ink Jet



### Videojet® 1710 Ink Jet Printer

Superior uptime with pigmented inks for easily readable codes. The Videojet 1710 delivers high contrast codes from a reliable, simple to operate and maintain system.

- Up to 5 lines of code with speeds up to 888 fpm (271 mpm)
- No mess, no waste, no mistake Smart Cartridge™ fluid delivery system reduces waste
- Advanced Clean Flow™ printhead design maximizes uptime
- High contrast, pigmented inks create bright, clean codes on dark or difficult surfaces



Small Character Ink Jet



### Videojet Excel® 2000 Series Ink Jet Printers

Specifically designed to work long and hard in tough environments, these systems code reliably in a wide variety of applications where speed and flexibility are key factors.

- Up to 4 lines of code with speeds up to 916 fpm (279 mpm)
- Pigmented option prints bright, highly legible codes on dark surfaces
- Auto flush option cleans printhead, nozzle and return line
- Widest range of industry-leading fluids



Small Character Ink Jet



### Videojet Excel® Series Specialty Ink Jet Printers

The Videojet Excel series of small character ink jet printers provides a variety of special application printers for unique production requirements.

- Excel Ultra High Speed (UHS) model for print speeds up to 1,100 fpm (330 mpm)
- Excel HR model for high resolution codes as small as 1/32" (0.66 mm)
- Excel Dual Nozzle (DN) model for multi-line and complex messages at high speeds
- Excel 273 dual head model for printing on two production lines or two locations on the same product



Small Character Ink Jet



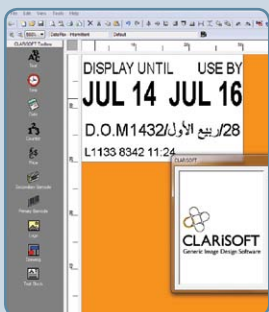
### Videojet CLARiNET® Software

This Package Coding Management (PCM) software is a single network setup and control solution for multiple technologies of coding and labeling equipment.

- Ensures accurate on-pack coding to deliver the right product, in the right package, with the right code, every time
- Increase production line efficiency, reduce operating costs
- More accurate information throughout the enterprise
- Valuable feedback on production performance



Package Coding Management



### Videojet CLARiSOFT® Software

This intuitive code design software provides one standard design solution to ensure consistent, accurate codes, even when using multiple marking and coding technologies.

- Advanced capabilities include easy to use wizard-based interface for complex codes
- Eliminates the need to create different designs for different printing equipment
- Unique date calculation manager and concession controls reduce human error
- All message designs can be created and managed from a central location



Package Coding Management



### Videojet IMprints™ Track & Trace Solutions

End-to-end, production floor suite of hardware, software and services that applies a unique code to individual items to capture key supply chain information.

- Capture key package-flow information that is easily fed into other business applications such as ERP and WMS
- Facilitate finding and removing product in case of recalls
- Assist in preventing counterfeiting and diversion
- Perform marketing analysis that relies on tracking products throughout the supply chain



Track & Trace





### Videojet® 46 Series Ink Jet Printers

High speed, high quality printing, reliability and reduced running costs. These printers are suitable for printing bright codes on darker surfaces, coding small components, or when available print space is limited.

- Up to 4 lines of print with speeds up to 1,111 fpm (339 mpm)
- Excellent print quality for micro-sized and pigmented coding applications
- Automatic printhead flushing and push button start/stop
- Airless, pump driven system



Small Character Ink Jet



### Wolke m600® advanced and basic Thermal Ink Jet Printers

The Wolke m600 printers solve a range of coding challenges with advanced printer architecture and an intuitive, easy to use interface. They deliver superior print quality with clean, no mess operation.

- Line speeds up to 250 fpm (75 mpm) at 600 x 240 dpi resolution
- Print a wide range of linear and 2D codes, including DataMatrix
- HP technology with quick cartridge replacement
- High resolution print suitable for machine vision inspection



Thermal Ink Jet



### Videojet® BX Series Binary Array Printers

With 128 x 256 dpi, these printers provide solid print quality for printing complex variable graphics, logos, promotional messages and decorative images.

- Printheads deliver 2-inch (51 mm) high print bands; dual configuration provides ability to print (4) continuous inches (102 mm)
- Exceptional throughput with line speeds up to 967 fpm (395 mpm)
- Optimum print quality during continuous operation from auto-phasing feature
- Crescendo controller provides powerful, easy to use interface



Binary Array



### Videojet DataFlex® Plus Thermal Transfer Overprinter

Provides ultimate productivity and efficiency for marking variable information such as date, time, batch codes, ingredients, and logos onto flexible packaging, labels or glossy cards.

- Print speeds up to 157 fpm (48 mpm) in intermittent modes and 197 fpm (60 mpm) in continuous mode
- 0.5 mm print gap delivers optimum ribbon usage and increased cost savings
- Patented bi-directional clutchless ribbon drive delivers more prints per roll and reduces ribbon breaks
- Intuitive, graphical user interface and 8.4" (21 cm) color touchscreen



Thermal Transfer Overprinting



### Videojet® P3400 Label Printer Applicator

Flexible, modular automatic label printing and application with multiple printer options and a variety of application modules for a customizable, off-the-shelf solution.

- High-quality thermal transfer printing for high-resolution bar codes and text
- Available with blow box, basic tamp, tamp jet, heavy duty tamp, two panel/two label, swing arm and corner wrap modules
- Multiple label configuration menu and flight time compensation for automatic label placement control



Print & Apply Labeling



### Videojet® 3120 10-Watt CO<sub>2</sub> Laser Marking System

The Videojet 3120 is a compact and flexible system that provides permanent, high quality codes with low maintenance and operating costs.

- Fastest 10-Watt laser printer offers speeds up to 1,000 characters/sec and 984 fpm (300 mpm)
- Steered beam technology provides high quality “continuous” lines even at high speeds, with unlimited font, graphics and format flexibility
- Efficient, fan cooled design results in long tube life, with low maintenance and operating costs



Laser Marking



### Videojet® 3320 30-Watt CO<sub>2</sub> Laser Marking System

The Videojet 3320 provides 30 Watts of power and higher speed for applications on tough materials or with complex messages, along with ease-of-use and low operating costs.

- Top speeds up to 1,300 characters/sec and 1,640 fpm (500 mpm)
- Wide range of lenses, beam delivery options and mounting choices allows easy integration into packaging machines or production lines
- IP65 wash down version provides marking in wet, cold and dusty applications without degrading performance or increasing maintenance



Laser Marking



### Videojet® 3430 50-Watt CO<sub>2</sub> Laser Marking System

The Videojet 3430 has 50 Watts of continuous power and high speed scanning for wire and cable, packaging and bottling applications.

- Top speeds up to 1,500 characters/sec and 1,640 fpm (500 mpm)
- Single-cabinet design with articulated arm can be easily moved and setup for maximum application flexibility – ideal for short runs at contract packaging companies
- Internal fan and water cooling system, combined with IP65 cabinet rating provides high uptime and low maintenance even in dirty, dusty and wet environments



Laser Marking



### Videojet® 7210 and 7310 Fiber Laser Marking Systems

The 7210 10-Watt and 7310 20-Watt pulsed fiber laser marking systems are the most compact and versatile for engraving metals and other hard substrates.

- The smallest marking head in the industry and a variety of lens and beam delivery options provide easy integration into production machinery
- High efficiency solid-state laser source generates very little heat, for nearly maintenance-free operation over years of usage
- Flexible and powerful software gives complete control over message format and content



Laser Marking



### Videojet® Nd:YAG DN50 and LN100 Laser Marking Systems

The Nd:YAG DN50A 50-Watt and LN100A 100-Watt marking systems provide more power and speed for marking metals and plastics in high throughput applications.

- Adjustable beam size allows thin or thick line marking and multiple laser parameters provide materials effects such as color change, engraving or annealing
- Flexible software and communications allows direct (manual) control or host (PC) control
- Powerful software provides direct import of graphics and font files, and controls array marking and batch sequences to automate coding



Laser Marking



### Videojet® 2300 Series Ink Jet Printers

High-resolution printing with a simple user interface, making message selection quick and error-free.

- 180 dpi resolution for high quality marks from alphanumerics to bar codes and graphics on corrugate cartons and shipping containers
- Small, single-unit system with printhead heights of 0.7", 2.1" and 2.8" (17, 50 and 70 mm)
- Consistent print quality from printhead micropurging with every print and reduced cost of ownership from unique ink-recycling circuit



Large Character Ink Jet



### Marsh® PatrimonPlus® Ink Jet Printing System

This large character printing system can operate both Valve Jet and HR Series printheads simultaneously to deliver high-resolution and dot matrix characters from one system.

- Print heights from 0.25" to 2.0" (6 to 50 mm) at print speeds up to 200 fpm (61 mpm)
- System drives up to sixteen printheads, with each printhead capable of printing up to three lines of text
- Choice of high resolution or dot matrix printheads for porous and non-porous surfaces



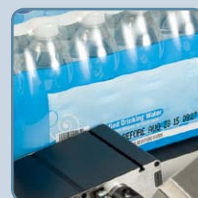
Large Character Ink Jet



### Videojet® 2120 Ink Jet Printer

Easy-to-use printer for applying single or twin-line alphanumeric codes to a variety of products or packages. A choice of printheads and inks enable printing on a wide range of porous and nonporous materials.

- Print heights up to 2.0" (50 mm) at speeds up to 371 fpm (113 mpm)
- Multiple printhead and ink options provide application flexibility
- Easy operation reduces coding errors and guided installation reduces setup/startup time
- Advanced message management features



Large Character Ink Jet



### Unicorn® and Unicorn® II Ink Jet Systems

Compact, single and twin-line, low resolution printing systems that can be programmed quickly and easily.

- Print heights up to 1.0" (25 mm) at speeds up to 200 fpm (61 mpm)
- Automatic date change, clock functions, consecutive counts and 52-message memory storage capacity
- Product names, identification numbers, automatic production counts and accurate time code capabilities are available at the touch of a button



Large Character Ink Jet



800-843-3610 / [www.videojet.com](http://www.videojet.com) / [info@videojet.com](mailto:info@videojet.com)

Videojet Technologies Inc. / 1500 Mittel Blvd. / Wood Dale IL 60191-1073 / USA

Phone 630-860-7300 Fax 800-582-1343