

# Governors State University OPUS Open Portal to University Scholarship

---

All Capstone Projects

Student Capstone Projects

---

Fall 2017

## GSU Event Portal

Mihir M. Mevada  
*Governors State University*

Deep D. Patel  
*Governors State University*

Savan R. Patel  
*Governors State University*

Rajdeep K. Thakar  
*Governors State University*

Follow this and additional works at: <https://opus.govst.edu/capstones>



Part of the [Computer Sciences Commons](#)

---

### Recommended Citation

Mevada, Mihir M.; Patel, Deep D.; Patel, Savan R.; and Thakar, Rajdeep K., "GSU Event Portal" (2017). *All Capstone Projects*. 356.  
<https://opus.govst.edu/capstones/356>

For more information about the academic degree, extended learning, and certificate programs of Governors State University, go to  
[http://www.govst.edu/Academics/Degree\\_Programs\\_and\\_Certifications/](http://www.govst.edu/Academics/Degree_Programs_and_Certifications/)

Visit the [Governors State Computer Science Department](#)

This Project Summary is brought to you for free and open access by the Student Capstone Projects at OPUS Open Portal to University Scholarship. It has been accepted for inclusion in All Capstone Projects by an authorized administrator of OPUS Open Portal to University Scholarship. For more information, please contact [opus@govst.edu](mailto:opus@govst.edu).

## **ABSTRACT**

GSU Event Portal focuses on providing an ease to people who wish to attend new events in a specific area of interest, where the events that are uploaded to the portal will be managed by the Event Organizers who are part of the portal.

Portal provides free as well as paid events, so that people can choose events as per their interest.

The portal provides Organizers the flexibility to create, manage, edit and remove events of any type and size. On the other side, Visitors can lookup events, they can save an event for their future interest and also pay for an event where applicable.

The application provides a user-friendly interface so that the Organizers and the Visitors can get the benefits of the service provided by the event without any trouble. The application helps users to find an event they wish to attend with ease. They can browse events according to location, date and type.

The main objective of the portal is advertising which helps the organizers to advertise their events and grab as much attention of the people to make their event more successful.

This age is the age of technology and online advertising of event can help the organizers to attract more people in an easy way compared to paper advertisement. The people interested in an event, can even buy tickets of that event through this portal.

## Table of Content

<b>1</b>	<b><i>Feature Description</i></b> .....	<b>1</b>
1.1	Competitive Information .....	1
1.2	Relationship to Other Applications/Projects .....	2
1.3	Assumptions and Dependencies .....	2
1.4	Future Enhancements .....	2
1.5	Definitions and Acronyms.....	2
<b>2</b>	<b><i>Technical Description</i></b> .....	<b>2</b>
2.1	Project/Application Architecture.....	3
2.2	Project/Application Information flows.....	3
2.3	Interactions with other Projects (if Any) .....	4
2.4	Interactions with other Applications .....	4
2.5	Capabilities .....	4
2.6	Risk Assessment and Management .....	4
<b>3</b>	<b><i>Project Requirements</i></b> .....	<b>5</b>
3.1	Identification of Requirements .....	5
3.2	Operations, Administration, Maintenance and Provisioning (OAM&P) .....	6
3.3	Security and Fraud Prevention .....	6
3.4	Release and Transition Plan .....	6
<b>4</b>	<b><i>Project Design Description</i></b> .....	<b>8</b>
<b>5</b>	<b><i>Project Internal/external Interface Impacts and Specification</i></b> .....	<b>9</b>
<b>6</b>	<b><i>Project Design Units Impacts</i></b> .....	<b>18</b>
6.1	Functional Area/Design Unit A.....	21
6.1.1	<i>Functional Overview</i> .....	21
6.1.2	<i>Impacts</i> .....	22
6.1.3	<i>Requirements</i> .....	22
<b>7</b>	<b><i>Open Issues</i></b> .....	<b>23</b>
<b>8</b>	<b><i>Acknowledgements</i></b> .....	<b>23</b>
<b>9</b>	<b><i>References</i></b> .....	<b>23</b>

## ***1 Feature Description***

As the name suggests, GSU Event Portal is an application used for advertising a particular event. This portal can help organizers advertise their event, grab attention of people who wish to participate in an event. On the other hand, users can browse through events depending on the location and type of event. The users can find events according to their area of interest. The portal provides organizers the flexibility to create, manage, remove and edit event of any type and size. The users can look up for an event, save an event for future reference and pay for an event where applicable.

There are 3 Modules in this project.

### **1.) Admin**

The administrator has full access to approve, edit, manage and remove events.

The administrator needs his user credentials in order to log in into the system.

### **2.) User/Visitor**

Users are basically people who are searching for an event according to his/her hobby or interest.

They can purchase the ticket for the event where applicable and can register online for the event they wish to attend.

### **3.) Organizer**

Organizers are the people who wish to promote their event. They can create event, describe the event and can decide the price of the event.

## ***1.1 Competitive Information***

The main competitor products which are already in market are Eventbrite, Eventbee and Peatix. These are very well-known portals which are currently very famous amongst both organizers to promote their event and for the users to browse and purchase tickets for an event. Our team has the skill and potential and has delivered the final product which will compete against the above three Event Portals. We hope that GSU Event Portal will be able to establish itself in the market even with such high competition.

### ***1.2 Relationship to Other Applications/Projects***

The GSU Event Portal is similar with other portals such as Eventbrite, Eventbee and Peatix. The main objective of all these portal is to provide easy event registration. The organizers which are a part of this application take the main benefit of selling out their events. The users/visitors of this application get the benefit of easy browsing an event according to their type of interest and can pay for that event. All the above portals do the same job of helping both users and organizers.

### ***1.3 Assumptions and Dependencies***

- The portal can be accessed by any computer which is connected to the Internet.
- The portal is platform independent.
- The payment functionality is depending on the Payment API
- The google maps functionality is depending on the Google Map API

### ***1.4 Future Enhancements***

For the future enhancements, we can add some of the features like giving a functionality to connect the social media accounts with the GSU event portal accounts, by doing this, one can share events or publish them using their social media accounts, which may help promoting the events in even larger scale of people.

Also, we can add a feature of maps with the help of google maps to let the user pin point the exact location of the event, so that people may get an ease to navigate directly through their cellphones.

### ***1.5 Definitions and Acronyms***

HTML – Hyper Text Markup Language

CSS – Cascading Style Sheet

MVC – Model View Controller

SQL – Sequence Query Language

## ***2 Project Technical Description***

The MVC (Model, View, Control) architecture separates a web application in to three major parts, the model, the view and the controller. This architecture provides and alternate way with an ease to develop ASP.Net web applications. MVC is having all the features which we used to utilize in ASP.net framework

which are master pages and the relationships between web pages with more features. This architecture is defined in the System.Web.Mvc Assembly of the .Net framework.

#### Models:

Models are the database logic of the application which will communicate to and forth with the database to post and retrieve the data for the application operations.

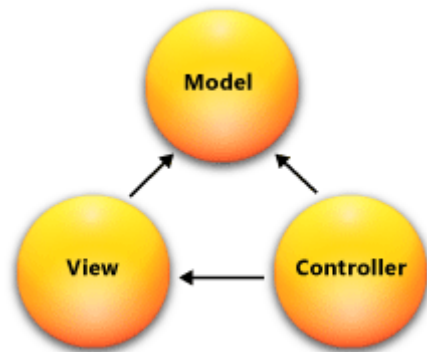
#### Views:

Views are the components which will be the presentation layer for the application. Which in other words will be the graphical user interface of the application.

#### Controllers:

Controllers are the components which will work between model and the view to render the application request and handle it with providing requested data from database and pass it to view to represent at GUI.

### 2.1 Application Architecture



### 2.2 Application Information flows

#### User:

Registration > Login > Search Events > Like/Bookmark/Register Events > Payment

#### Organizer:

Registration > Login > Create/Update/Delete Events > Registration List/Payment List

#### Admin:

Login > User List/Organizer List/ Event List > Create/Update/Delete Events > Registration List/Payment List

### **2.3 *Interactions with other Projects (if Any)***

The Portal does not have any interactions with other projects.

### **2.4 *Interactions with other Applications***

The GSU Event Portal interacts with google API to provide the facility of maps to the user and email facility for email notifications to the users. The Event Portal also uses payment API for any payments done by the user for any event.

### **2.5 *Capabilities***

The Portal has capabilities of retrieving multiple records from database at once. It also does the database operations wisely with multiple users at a time. The Organizers have the freedom to create, update and delete events.

### **2.6 *Risk Assessment and Management***

While creating the events, misplacing the information may result in data failure to the database as per the constraints set up for the data tables.

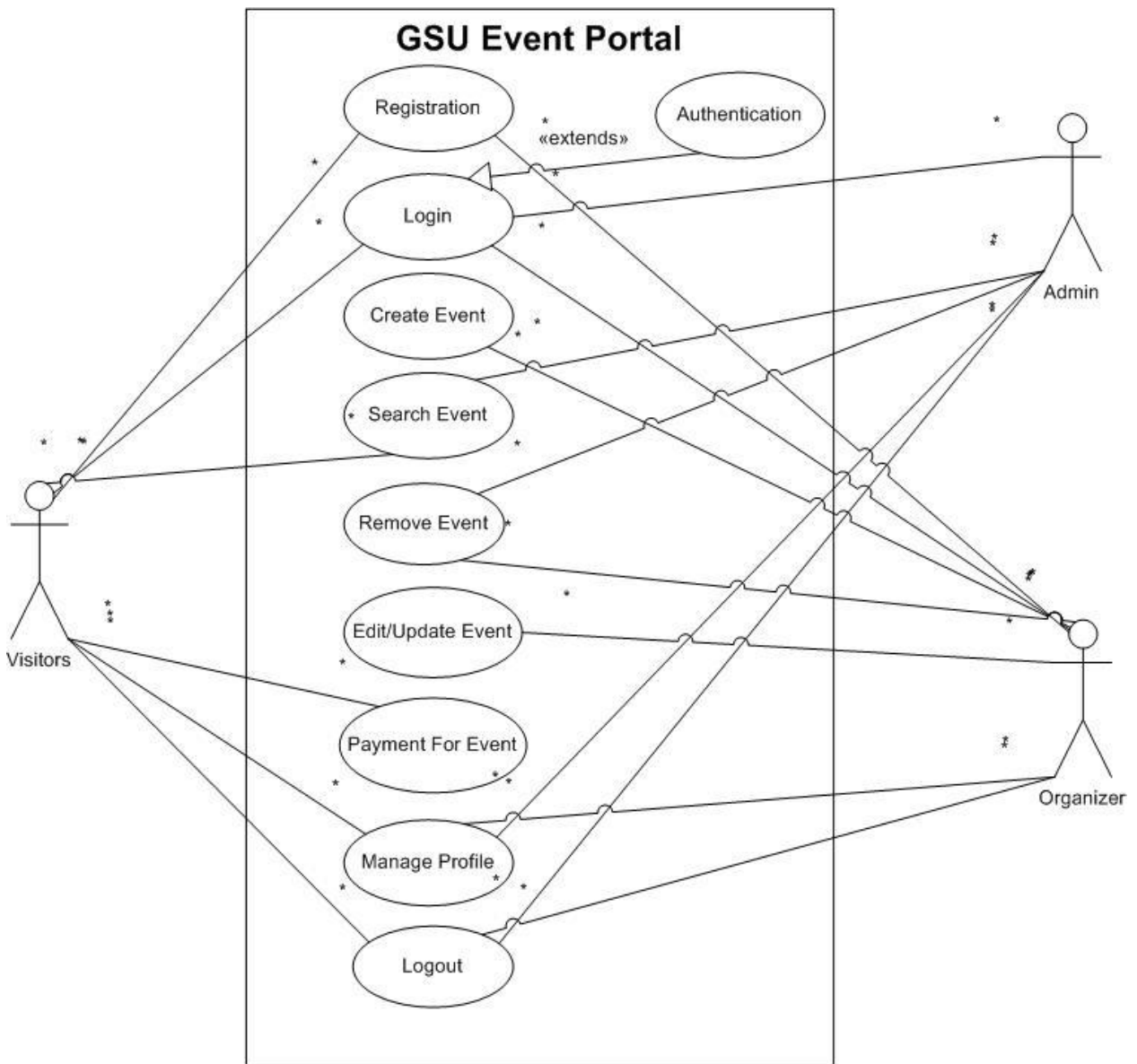
As this portal is developed for a small scale as per current requirement, if large number of users hits the website at once, this may result in system failure. To resolve the system failure occurred by large number of hits, we can upgrade this system to a large scale with large data servers.

### 3 Project Requirements

Requirements for the project are as follows:

#### 3.1 Identification of Requirements

Use Case Diagram:





#### <GSU-GS\_ EP2017-001-Visitor>

Visitors can register themselves in the portal for looking up more information about events that they are interested in and they can also register for the specific event. They can also manage their profile as well as payment methods.

Input: Event, Registration details

Output: Registered event information and conformation.

#### GSU-GS\_ EP2017-002-Organizer>

Organizers can register themselves to broadcast their events and can login in to the portal to manage, create, update or remove the events. They can review the bookings on their events and can also check the payments.

Input: Creation of new event, monitor existing events.

Output: Event list for the organizer and registered user list for that event.

#### GSU-GS\_EP2017-003-Admin>

Admin can administer accounts on the portal. He can view the logs of registrations for new accounts as well as new uploaded events. He can also review created events and can edit or remove it.

Input: User and Event details, registration and payment charts.

Output: List of users, organizers and events.

### **3.2 Operations, Administration, Maintenance and Provisioning (OAM&P)**

Admin does the maintenance on regular basis for database and the user accounts.

Also, Organizers can maintain their log for events and registrations with list of payments done.

Fault Recovery will be done by admin as he will be doing the database backup on a regular basis.

### **3.3 Security and Fraud Prevention**

GSU Event Portal provides security to the user details with the functionality of credentials and proper authentication. If any intruder tries to access a user's account by changing the password, users will be notified by an email notification.

### **3.4 Release and Transition Plan**

The GSU Event Portal goes through different phases such as Planning, Executing and Closing. The planning of the project is from 28<sup>th</sup> August 2017 to 11<sup>th</sup> September 2017.

The Executing Phase further divides itself into three other processes.

Process-1, Designing is from 12<sup>th</sup> September 2017 to 3<sup>rd</sup> October 2017.

Process-2, Coding is from 4<sup>th</sup> October 2017 to 1<sup>st</sup> November 2017.

Process-3, Testing is from 2<sup>nd</sup> November to 23<sup>rd</sup> November 2017.

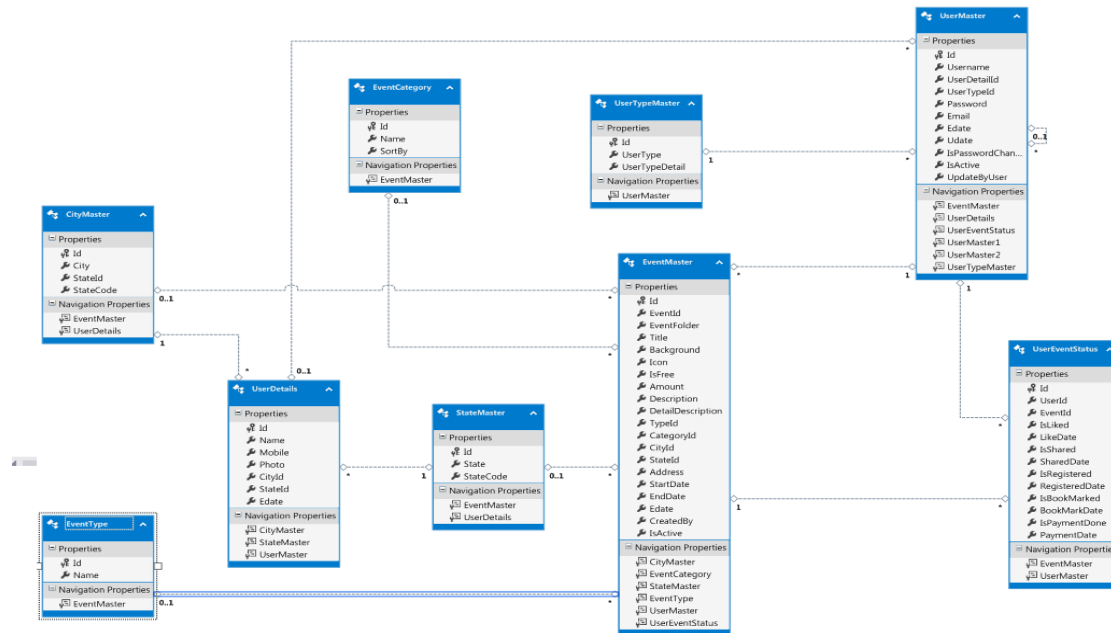
The Closing phase includes the documentation process which is from 24<sup>th</sup> November to 3<sup>rd</sup> December 2017.

The period given for each phase and process is different according to the requirements of the project.

The Planning phase is given 2 weeks, designing process is allocated 3 weeks, Coding process is allocated 4 weeks, Testing process is allocated 3 weeks and the Closing phase documentation is given 1 week (approximately).

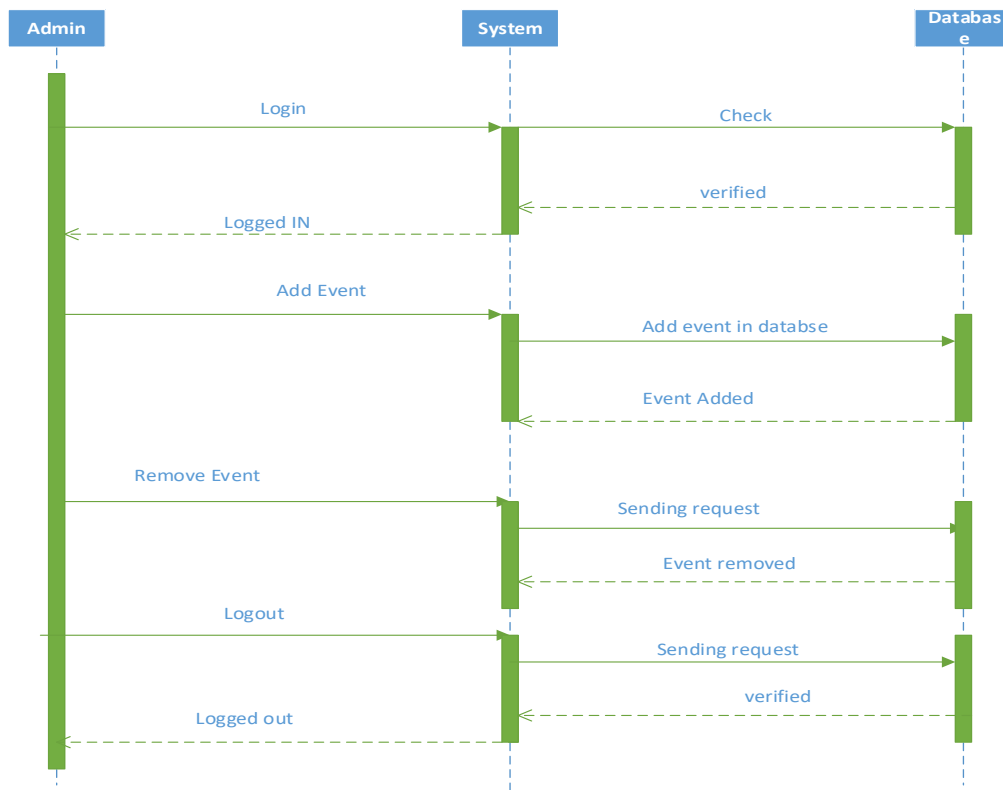
## 4 Project Design Description

ER-Diagram:

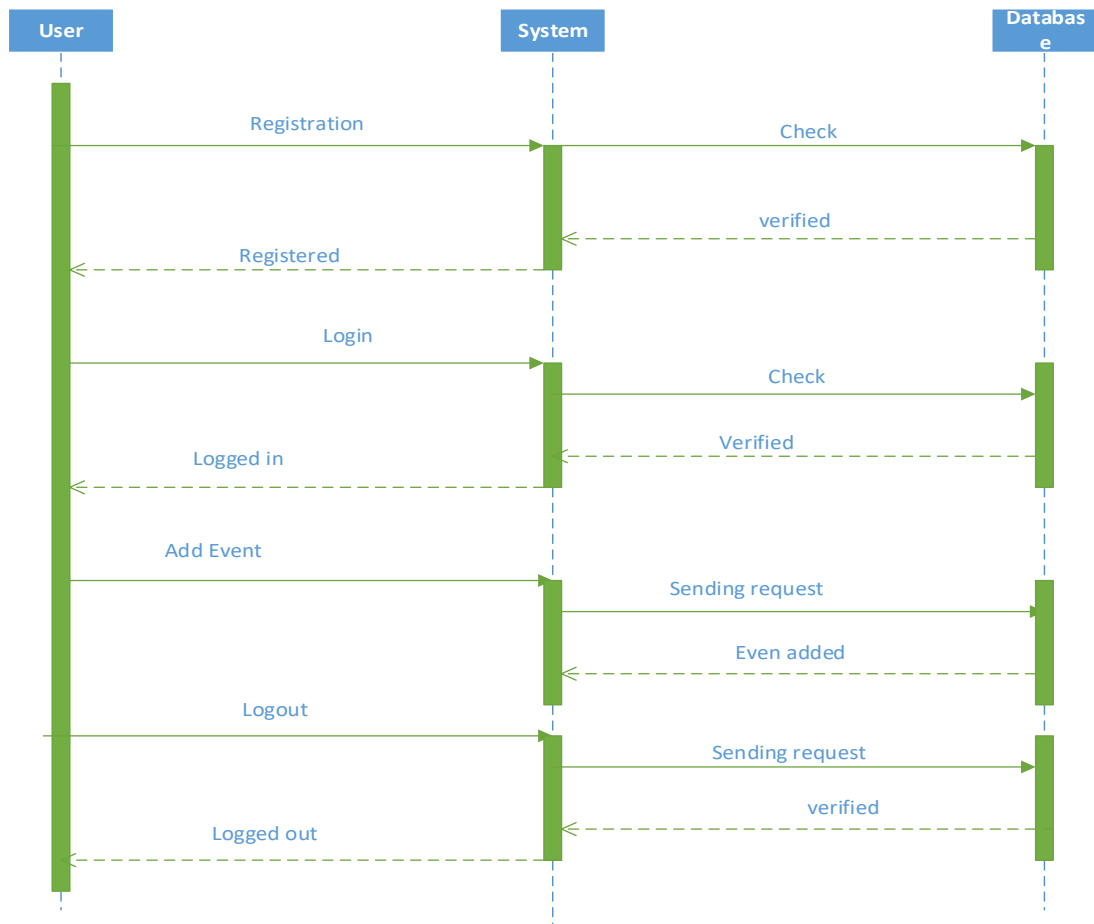


Sequence Diagram:

➤ Admin Module:



➤ User Module:



## 5 Internal/external Interface Impacts and Specification

For the creation of this web application, we have followed the standards provided by the Governors State University, to achieve the course requirements. Requirements as in, the layout of the application, features of the application, the user interface, etc. which helps us understand the importance of maintaining the standard for an organization.

External Interface Specifications:

- The portal uses the Google API to provide the feature of google maps and locations.
- It uses Google Mail API for the Email functionality
- For the payment module, it uses an extern plug in for the payment processing.

Internal Interface:

Home Page:

Register Now

Login

GSU Event

HOMEEVENTSCONTACT USABOUT US

BLACKJACK TOURNAMENT

Dec 10 2017 - 19:00 at Hammond, Indiana.

REGISTER NOW

00 SELECT EVENT FEE

SELECT TYPE

SELECT CATEGORY

7/24 EVENT AVAILABLE

Lorem ipsum dolor sit amet, consectetur adipiscing elit. Integer sed vel velit.

DETAILS

GREAT LOCATIONS

Lorem ipsum dolor sit amet, consectetur adipiscing elit. Integer sed vel velit.

DETAILS

MORE THEN 200 SPEAKERS

Lorem ipsum dolor sit amet, consectetur adipiscing elit. Integer sed vel velit.

DETAILS

LETS PARTY AFTER EVENT

Lorem ipsum dolor sit amet, consectetur adipiscing elit. Integer sed vel velit.

DETAILS

FUTURE EVENTS

NOV

THE DANCE SHOW

Dance 2017

Nov 06 2017 9 Oak Forest, Illinois.

Ticket is \$ 10.

Dance show 2017

TICKETS & DETAILS

DEC

YOU BRING THE TALENT

Illinois got talent

Dec 07 2017 9 Chicago, Illinois.

Ticket is \$ 50.

Talent show competition.

TICKETS & DETAILS

DEC

Under 17 Soccer tournament

Dec 08 2017 9 Naperville, Illinois.

Ticket is Free.

under 17 soccer tournament. This event is awareness of fitness.

TICKETS & DETAILS

DEC

Painting tournament

Dec 09 2017 9 Park Forest, Illinois.

Ticket is Free.

This event is all about painting. people can show their talent here.

TICKETS & DETAILS

SEE ALL EVENTS

ABOUT US

GSU Event Portal focuses on providing an ease to people who wish to attend new events in a specific area of interest, where the events that are uploaded to the portal will be managed by the Event Organizers who are part of the portal.

+1 708-534-5000

info@govstevent.com

POPULAR SEARCHES

Online Registration

Sell Event Tickets

Post Events

Event Planning Software

Online Event Management

Event Management Software

Event Payment

RECENT TWEETS

isamerican Cupcake chocolate cake sweet roll. Gummies macaroon biscuit cupcake candy dragée. #Conference about 2 hours ago

isamerican Cupcake chocolate cake sweet roll. Gummies macaroon biscuit cupcake candy dragée. #Conference about 2 hours ago

INSTAGRAM PHOTOS

About | Blog | Help | Careers | Press | Developers | Terms | Privacy | Cookies | All Rights Reserved

10

Event Page:

Register Now

Login

GSU Event

HOMEEVENTSCONTACT USABOUT US

ALL EVENTS

HomeEvents

CATEGORY

AllBusinessHealthSpiritualityScience & TechnologyHobbiesFashionFamily & EducationTravel & OutdoorCharity & CausesFilm & MediaSports & FitnessCommunityOther

EVENT TYPE

PRICE

THE DANCE SHOW

NOV 6

Dance 2017

Nov 06 2017 Oak Forest, Illinois.

Ticket is \$ 10.

Dance show 2017

TICKETS & DETAILS

YOU BRING THE TALENT

DEC 7

Illinois got talent

Dec 07 2017 Chicago, Illinois.

Ticket is \$ 50.

Talent show competition.

TICKETS & DETAILS

Under 17 Soccer tournament

DEC 8

Under 17 soccer tournament

Dec 08 2017 Naperville, Illinois.

Ticket is Free.

under 17 soccer tournament. This event is awareness of fitness.

TICKETS & DETAILS

Painting tournament

DEC 9

Painting tournament

Dec 09 2017 Park Forest, Illinois.

Ticket is Free.

This event is all about painting, people can show their talent here.

TICKETS & DETAILS

KARAOKE NIGHT

DEC 9

karaoke music event

Dec 09 2017 Crete, Illinois.

Ticket is Free.

This event is basically a karaoke night. This event is for fun and enjoy a time with friends and family.

TICKETS & DETAILS

Homewood country Christmas house decorating contest

DEC 10

Homewood country Christmas house decorating contest

Dec 10 2017 Homewood, Illinois.

Ticket is \$ 10.

House decorating contest

TICKETS & DETAILS

Showing 1 to 6 of 8 Events

12Next

ABOUT US

GSU Event Portal focuses on providing an ease to people who wish to attend new events in a specific area of interest, where the events that are uploaded to the portal will be managed by the Event Organizers who are part of the portal.

+1 708-534-5000

info@govstevent.com

POPULAR SEARCHES

Online Registration

Sell Event Tickets

Post Events

Event Planning Software

Online Event Management

Event Management Software

Event Payment

RECENT TWEETS

Isamerican Cupcake chocolate cake sweet roll. Gummies macaroon biscuit cupcake candy dragée. #Conference about 2 hours ago

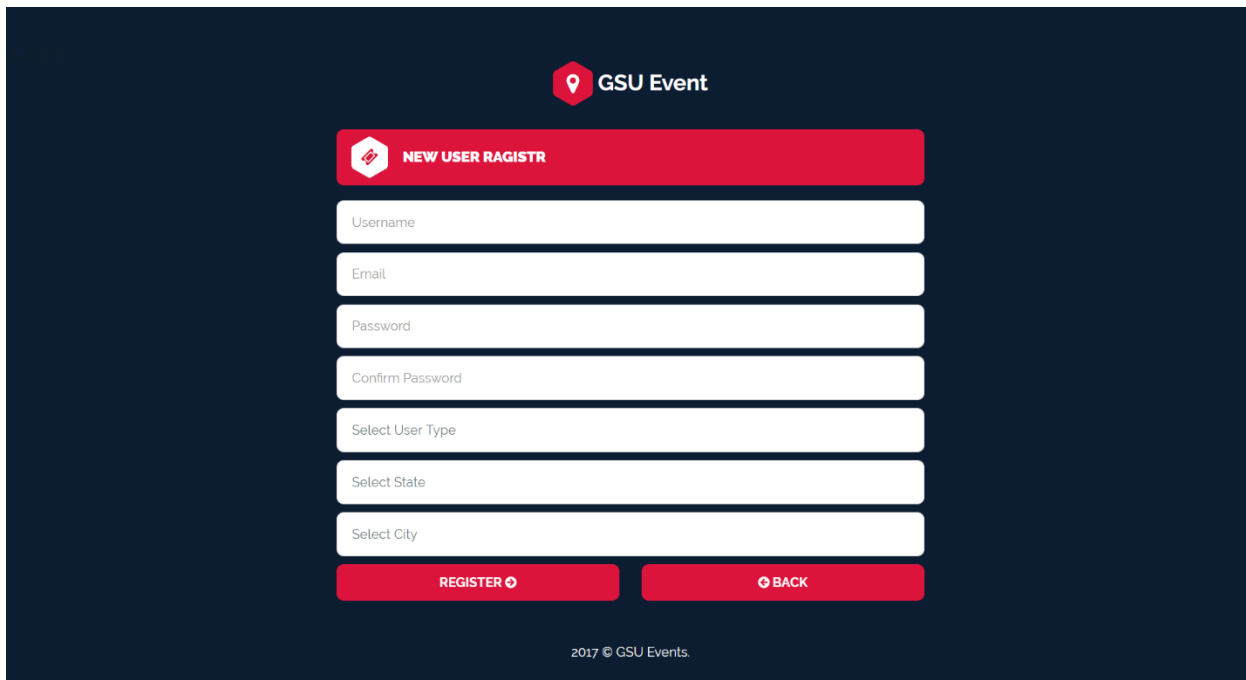
Isamerican Cupcake chocolate cake sweet roll. Gummies macaroon biscuit cupcake candy dragée. #Conference about 2 hours ago

INSTAGRAM PHOTOS

AboutBlogHelpCareersPressDevelopersTermsPrivacyCookiesAll Rights Reserved

11

## Registration Page:



The registration page features a dark blue background. At the top center is the GSU Event logo, which consists of a red hexagon with a white location pin icon and the text "GSU Event". Below the logo is a red horizontal bar with a white hexagon icon containing a red location pin and the text "NEW USER REGISTR". Underneath this bar are seven white input fields stacked vertically, labeled "Username", "Email", "Password", "Confirm Password", "Select User Type", "Select State", and "Select City". At the bottom of the form are two red buttons: "REGISTER" with a white location pin icon and "BACK" with a white location pin icon. At the very bottom center, the text "2017 © GSU Events." is displayed.

GSU Event

NEW USER REGISTR

Username

Email

Password

Confirm Password

Select User Type

Select State

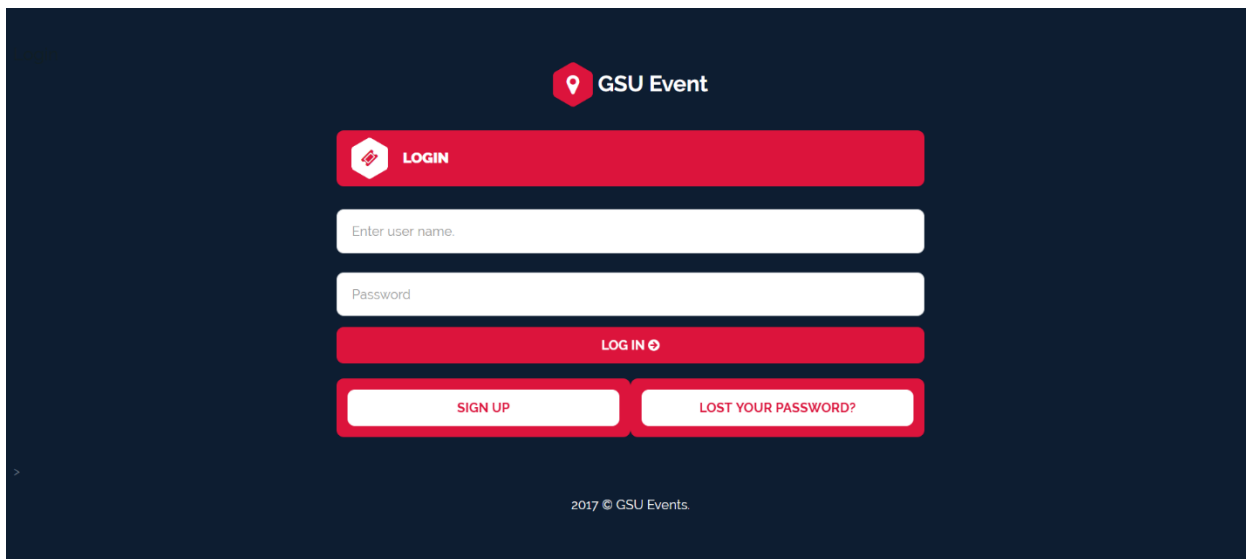
Select City

REGISTER

BACK

2017 © GSU Events.

## Login Page:



The login page features a dark blue background. At the top center is the GSU Event logo, which consists of a red hexagon with a white location pin icon and the text "GSU Event". Below the logo is a red horizontal bar with a white hexagon icon containing a red location pin and the text "LOGIN". Underneath this bar are two white input fields stacked vertically, labeled "Enter user name." and "Password". Below the input fields is a red button labeled "LOG IN" with a white location pin icon. At the bottom of the form are two white buttons with red borders: "SIGN UP" and "LOST YOUR PASSWORD?". At the very bottom center, the text "2017 © GSU Events." is displayed.

GSU Event

LOGIN

Enter user name.

Password

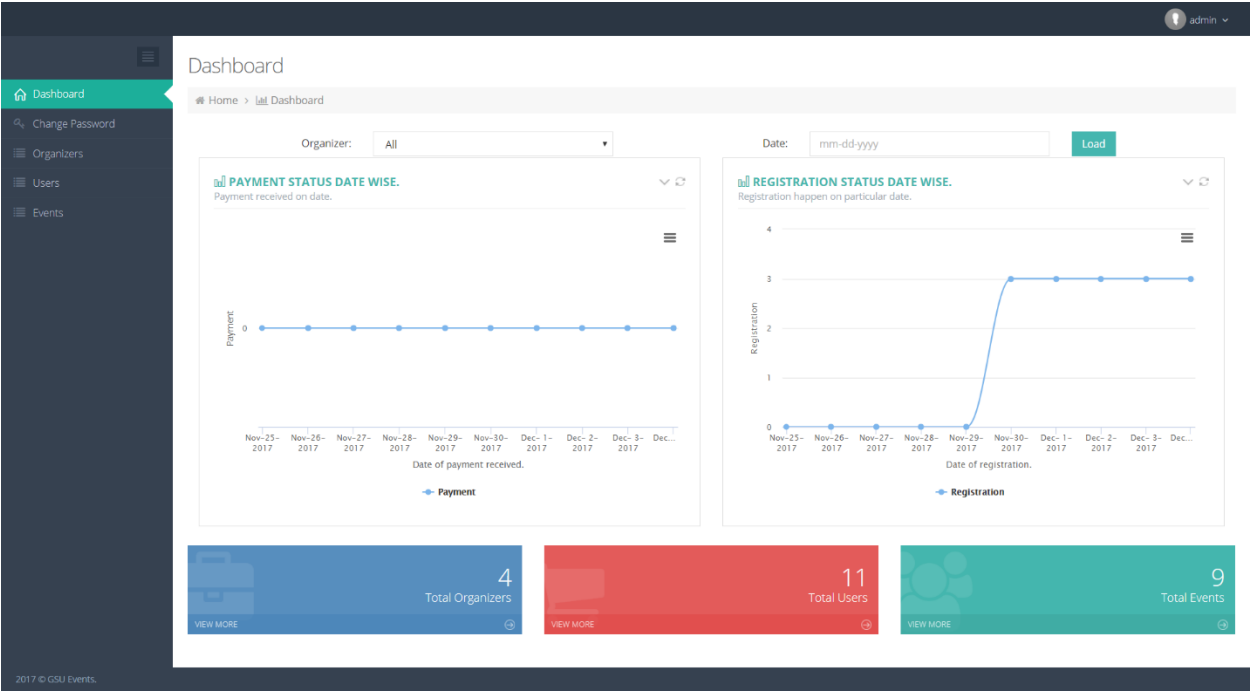
LOG IN

SIGN UP

LOST YOUR PASSWORD?

2017 © GSU Events.

Admin Dashboard:



Change Password:

The Change Password form is located in the sidebar under 'Change Password'. It contains three input fields and a submit button.

**Change Password**

Dashboard > Change Password

Current Password:

New Password:

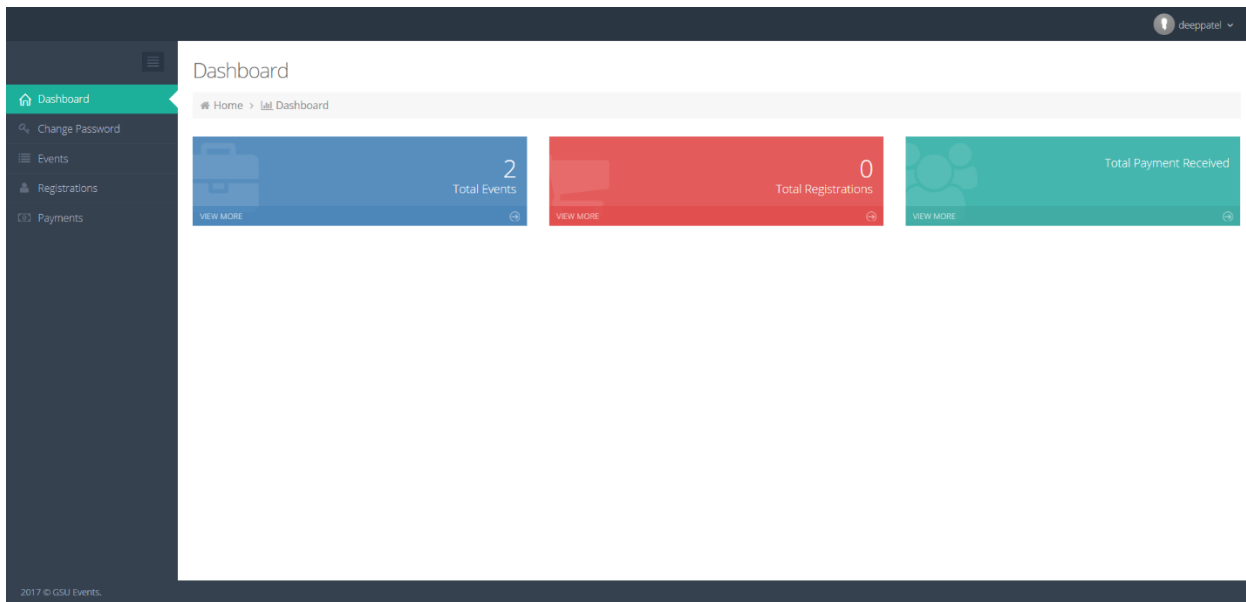
Confirm Password:

**SUBMIT**

2017 © GSU Events.



## Organizer Dashboard:



## Add New Event:

The 'Save Event' form allows users to create a new event. It includes the following fields and options:

- Event Title:** Text input field.
- Background Image:** File upload button (Choose File) and status (No file chosen).
- Icon Image:** File upload button (Choose File) and status (No file chosen).
- Short Description:** Text input field.
- Detail Description:** Text input field.
- Is Free:** Dropdown menu (currently set to No).
- Price:** Text input field.
- Event Type:** Dropdown menu (currently set to Select).
- Event Category:** Dropdown menu (currently set to Select).
- Address:** Text input field.
- State:** Dropdown menu (currently set to Select).
- City:** Dropdown menu (currently set to Select).
- Event start date:** Text input field (Dec-04-2017 15:04).
- Event end date:** Text input field (Dec-04-2017 15:04).

At the bottom, there are 'Save' and 'Cancel' buttons. The footer indicates '2017 © GSU Events'.

Event List-Edit-Delete:

Dashboard

Change Password

Events

Registrations

Payments

Event List

Dashboard > Event List

+ Add Event

Search Title, EventId, Type, Category, City, State.

Sr No.	Title	Event Id	Background	Icon	Is Free	Amount	ShortDescription	DetailDescription	Type	Category	City	State	Address	Start Date	End Date	Action
1	FIFA 2017 LAN Tournament	GSUEVENT_1	Background	Icon	No	10	This is the LAN gaming tournament where player compete with each other in FIFA 2017.	This tournament is having a prize money for the winners. 1st winner gets \$200, 2nd winner gets \$100 and 3rd winner gets \$50.	Other	Sports & Fitness	Hazel Crest	Illinois	Hazel crest. LAN cafe	29-11-2017 21:23	29-11-2017 21:23	Edit Delete
2	Painting tournament	GSUEVENT_2	Background	Icon	Yes	NA	This event is all about painting. people can show their talent here.	This event is for those people who loves art and painting. Main motto of this event is raise awareness about nature. so please join this event and show your talent.	Other	Charity & Causes	Park Forest	Illinois	Perk Forest	09-12-2017 10:00	09-12-2017 13:00	Edit Delete

Showing 1 to 2 of 2 Events

1

2017 © GSU Events.

User Dashboard:

Dashboard

Change Password

Liked Events

Bookmarked Events

Registered Events

Dashboard

Home > Dashboard

Liked Events

1

Total Liked Events

VIEW MORE

Bookmarked Events

1

Total Bookmarked Events

VIEW MORE

Registrations

2

Total Registrations

VIEW MORE

2017 © GSU Events.

## Event Registration:

Welcome, smitpatelLogout

GSU Event

HOMEEVENTSCONTACT USABOUT US

# PAINTING TOURNAMENT

HomeEventsEvent Detail Page

★

WHAT'S ABOUT EVENT / whats going on there come and learn

This event is all about painting. people can show their talent here.

EVENT TYPE - OTHER

EVENT CATEGORY - CHARITY & CAUSES

REGISTER FOR EVENT

Dec 2017

EVENT STARTS

Dec 2017

EVENT ENDS

10:00

This event is for those people who loves art and painting. Main motto of this event is raise awareness about nature. so please join this event and show your talent.

LikeBookmark

GO TO LOCATION

WHEN & WHERE

Park Forest,  
Park Forest,  
Illinois.  
From Saturday, December 09, 2017  
10:00  
To Saturday, December 09, 2017  
13:00  
Add to My Calendar

ORGANIZER

Fusce pellentesque velit  
brodunt egestas. Pellentesque  
habitant morbi.Proin gravida nibh  
vel velit auctor aliquet. Aenean  
solicitudin, lorem quis more...  
facebook.com/imorganiser  
imorganiser  
http://www.organiserweb.com  
SEND MESSAGE

EVENT PRICE - Free

REGISTER

★

YOU MAY LIKE

FIFA 17

NOV

Nov 29 2017 - 21:23 Hazel Crest / Illinois

This is the LAN gaming tournament where player compete with each other in FIFA 2017.

REGISTER NOW

YOU BRING THE TALENT

DEC

Dec 07 2017 - 09:00 Chicago / Illinois

Talent show competition.

REGISTER NOW

Under 17 Soccer tournament

DEC

Dec 08 2017 - 09:00 Naperville / Illinois

under 17 soccer tournament. This event is awareness of fitness.

REGISTER NOW

ABOUT US

GSU Event Portal focuses on providing an ease to people who wish to attend new events in a specific area of interest, where the events that are uploaded to the portal will be managed by the Event Organizers who are part of the portal.

+1 708-534-5000  
info@govstevent.com

POPULAR SEARCHES

Online Registration

Sell Event Tickets

Post Events

Event Planning Software

Online Event Management

Event Management Software




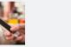


Event Payment

RECENT TWEETS

Isamerican Cupcake chocolate cake sweet roll. Gummies macaroon biscuit cupcake candy dragée. #Conference about 2 hours ago

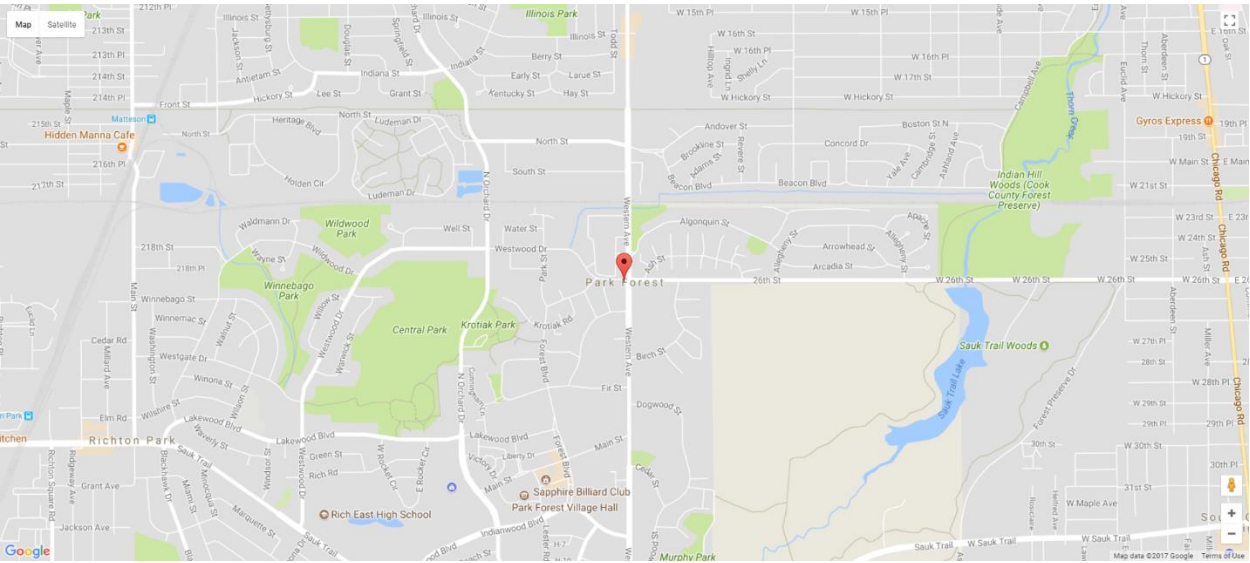
Isamerican Cupcake chocolate cake sweet roll. Gummies macaroon biscuit cupcake candy dragée. #Conference about 2 hours ago

INSTAGRAM PHOTOS



About | Blog | Help | Careers | Press | Developers | Terms | Privacy | Cookies | All Rights Reserved

Maps:



## 6 Design Units Impacts

Table 1: CityMaster

Sr. No	Field Name	Data Type	Constraints	Description
1	ID	INT	PK	
2	City	Varchar(50)	Not Null	
3	State ID	Int	FK	Refrences StateMaster
4	StateCode	Varchar(10)	NotNull	

Table2 : StateMaster

Sr. No.	Field Name	Data Type	Constraints	Description
1	ID	INT	PK	
2	State	Varchar(50)	NotNull	
3	StateCode	Varchar(10)	NotNull	

Table3 : EventCategory

Sr. No.	Field Name	Data Type	Constraints	Description
1	ID	Int	PK	
2	Name	Varchar(50)	Null	
3	SortBy	Int	Null	

Table4 : EventMaster

Sr. No.	Field Name	Data Type	Constraints	Description
1	ID	INT	PK	
2	EventID	Varchar(50)	Null	
3	EventFolder	Varchar(500)	Null	
4	Title	Varchar(150)	NotNull	
5	Background	Varchar(1250)	Null	
6	Icon	Varchar(1250)	Null	
7	IsFree	Bit	NotNull	
8	Amount	Int	Null	

9	Description	Varchar(150)	Null	
10	Detailed Description	Varchar(MAX)	Null	
11	TypeID	INT	FK	Refrences EventTYPE
12	CategoryID	INT	FK	Refrences EventCategory
13	CityID	INT	FK	Refrences CItyMaster
14	StateID	INT	FK	Refrences StateMaster
15	Address	Varchar(150)	Null	
16	StartDate	Datetime	NotNull	
17	EndDate	Datetime	NotNull	
18	EDate	Datetime	NotNull	
19	CreatedBy	INT	Null	
20	IsActive	Bit	Null	

Table5 : EventType

Sr. No.	Field Name	Data Type	Constraints	Description
1	ID	INT	PK	
2	Name	Varchar(50)	NotNull	

Table6 : UserDetails

Sr. No.	Field Name	Data Type	Constraints	Description
1	ID	INT	PK	
2	Name	Varchar(250)	Null	
3	Mobile	Varchar(15)	Null	
4	Photo	Varchar(500)	Null	
5	CityID	INT	FK	Refrences CItyMaster
6	StateID	INT	FK	Refrences StateMAster

7	EDate	DateTime	NotNull	
---	-------	----------	---------	--

Table7 : UserEvent Status

Sr. No.	Field Name	Data Type	Constraints	Description
1	ID	INT	PK	
2	UserID	INT	FK	Refrences UserMaster
3	EventID	INT	FK	Refrences EventMaster
4	IsLiked	Bit	Null	
5	LikeDate	Datetime	Null	
6	IsShared	Bit	Null	
7	SharedDate	Datetime	Null	
8	IsRegistered	Bit	Null	
9	Registered Date	Datetime	Null	
10	IsBookmarked	Bit	Null	
11	BookmarkDate	Datetime	Null	
12	IsPaymentDone	Bit	Null	
13	PaymentDate	Datetime	Null	

Table8 : UserMaster

Sr. No.	Field Name	Data Type	Constraints	Description
1	ID	INT	PK	
2	UserName	Varchar(150)	NotNull	
3	UserDetailID	INT	FK	Refrences UserDetails
4	UserTypeID	INT	FK	Refrences UserType Master
5	Password	Varchar(150)	NotNull	
6	Email	Varchar(150)	NotNull	
7	Edate	Varchar(50)	NotNull	

8	Update	Varchar(50)	Null	
9	IsPasswordChanged	Bit	Null	
10	IsActive	Bit	Null	
11	UpdatebyUser	Bit	FK	Refrences UserMaster

Table9 : UserType Master

Sr. No.	Field Name	Data Type	Constraints	Description
1	ID	INT	PK	
2	UserType	INT	NotNull	
3	UserTypeDetail	Varchar(50)	NotNull	

## 6.1 Functional Area A/Design Unit A

### 6.1.1 Functional Overview

- Visitor:
  - Registration:
    - Visitors can register themselves in the portal for looking up more information about events that they are interested in and they can also register for the specific event. They can also manage their profile as well as payment methods.
  - Login:
    - Visitors can login into the portal to book an event or review their account.
  - Manage Event:
    - Visitors can manage their saved events, remove event and pay for the events.
  - Account:
    - Users can manage their account and payment methods.
- Organizer:
  - Registration:
    - Organizers can register themselves to broadcast their events on this portal.
  - Login:



- Organizers can login into the portal to manage, create, update or remove events.
- Activity:
  - Organizers can review the bookings for their events and can check the payments made on their events.
- Admin:
  - Admin can administer accounts on the portal. He can view the logs of registrations for new accounts as well as new uploaded events. He can also review created events and can edit or remove it.

### **6.1.2 Impacts**

The system will provide ease to users of this application to manage, and organize events online without any physical stress.

### **6.1.3 Requirements**

#### ***Hardware Requirements***

- RAM: 1 GB
- Processor: Core 2 DUO and plus

#### ***Software Requirements***

- OS: Windows, MAC, Android

#### ***Non-Functional Requirements***

##### Performance Requirements:

The system should be reliable.

Appropriate Error Message should be displayed if a functionality goes wrong.

Web pages should not take a long time to load.

##### Security Requirements:

The database should be secured.

The transaction should be processed securely so that the payment details are not mishandled.

Database can be accessed only after providing proper authentication credentials.

### Safety Requirements:

The user can access their profile only after entering proper credentials.

The user data must not be mishandled.

Capacity - The website should handle 25,000 requests at a given point of time.

Availability - Website should have uptime of 99.9% in all times.

Recoverability - Website should recover in 2 minutes recovery time, in case of outages of any reason.

Maintainability - The website maintenance can take place during the midnight of every Monday to apply updates and data backup procedures.

Security – The website should be prepared and protected against any attacks.

Regulatory - The website should be able to comply with the data collection standards in each state of the United States.

## **7 *Open Issues***

GSU Event Portal is developed to sustain as a best accessible online event portal with covering almost all the features to provide an ease to users in the current competitive web market. Also, to make this portal at its best in serving people, we can still add some more features, for example, adding google maps to let people use it directly through their cellphone devices.

## **8 *Acknowledgements***

All the team members involved in this project would like to sincerely thank our project guide Prof. Alex Liu, He has been very helpful with us throughout the completion of our project. We are very glad to be under his shadow during this Graduate Seminar Project.

## **9 *References***

- [www.eventbrite.com](http://www.eventbrite.com)
- [https://msdn.microsoft.com/en-us/library/dd381412\(v=vs.108\).aspx](https://msdn.microsoft.com/en-us/library/dd381412(v=vs.108).aspx)
- Templets provided by the institution.